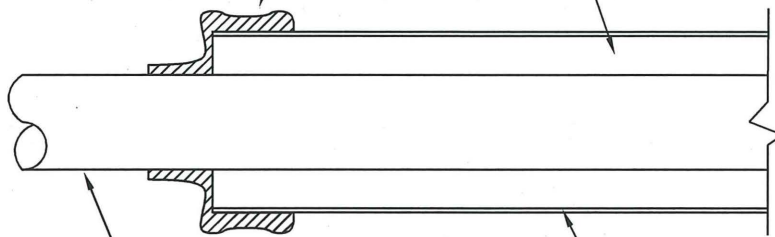


N:\CAD Data\Standard Dwg\Water Details\WA-4.4_Pipe & Casing dtl.dwg, 4/10/2007 8:58:50 AM

INSTALL FLEXIBLE END SEAL
ON EACH END OF CASING PIPE.
(*PSI MODEL "W" OR
APPROVED EQUAL).

FILL SPACE BETWEEN
CASING PIPE & CARRIER PIPE WITH
SLURRY OR BLOWN IN SAND AS
REQUIRED BY INSTALLATION PERMITS.



(***)RESTRAINED
MECHANICAL JOINT
D.I. CARRIER PIPE

(**)STEEL CASING
ASTM A 139 GRADE B
MIN. WALL THICKNESS(**)

3" MIN GAP

STAINLESS STEEL CASING SPACER
(*PSI MODEL C8G-2 OR APPROVED EQUAL)
3 PER 18' JOINT OF PIPE, EQUALLY SPACED

(**)SEE PLANS FOR CASING SIZE
AND MINIMUM WALL THICKNESS

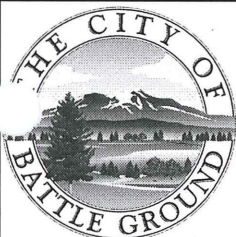
(***)SEE PLANS FOR CARRIER PIPE
SIZE AND CLASS RATING

*Pipeline Seal and Insulator, Inc.

1. PUBLIC AND PRIVATE MAINS SHALL BE PLACED IN SEPARATE CASINGS.
2. FOR CASINGS UNDER RAILROAD TRACKS, WRITTEN PERMISSION FROM THE OWNER OF THE RAILROAD TRACKS IS REQUIRED PRIOR TO OBTAINING CITY OF BATTLE GROUND PERMITS TO PROCEED.
3. NO PRIVATE UTILITIES SHALL BE ALLOWED IN CITY OF BATTLE GROUND CASINGS.

PIPE AND CASING

PLAN #



CITY OF BATTLE GROUND
APPROVED

CITY ENGINEER

4/16/07
DATE

REVISIONS:	DATE:	DRAWN:	DESIGNED:
1	4/16/07	JMH	MCH

WA-4.4