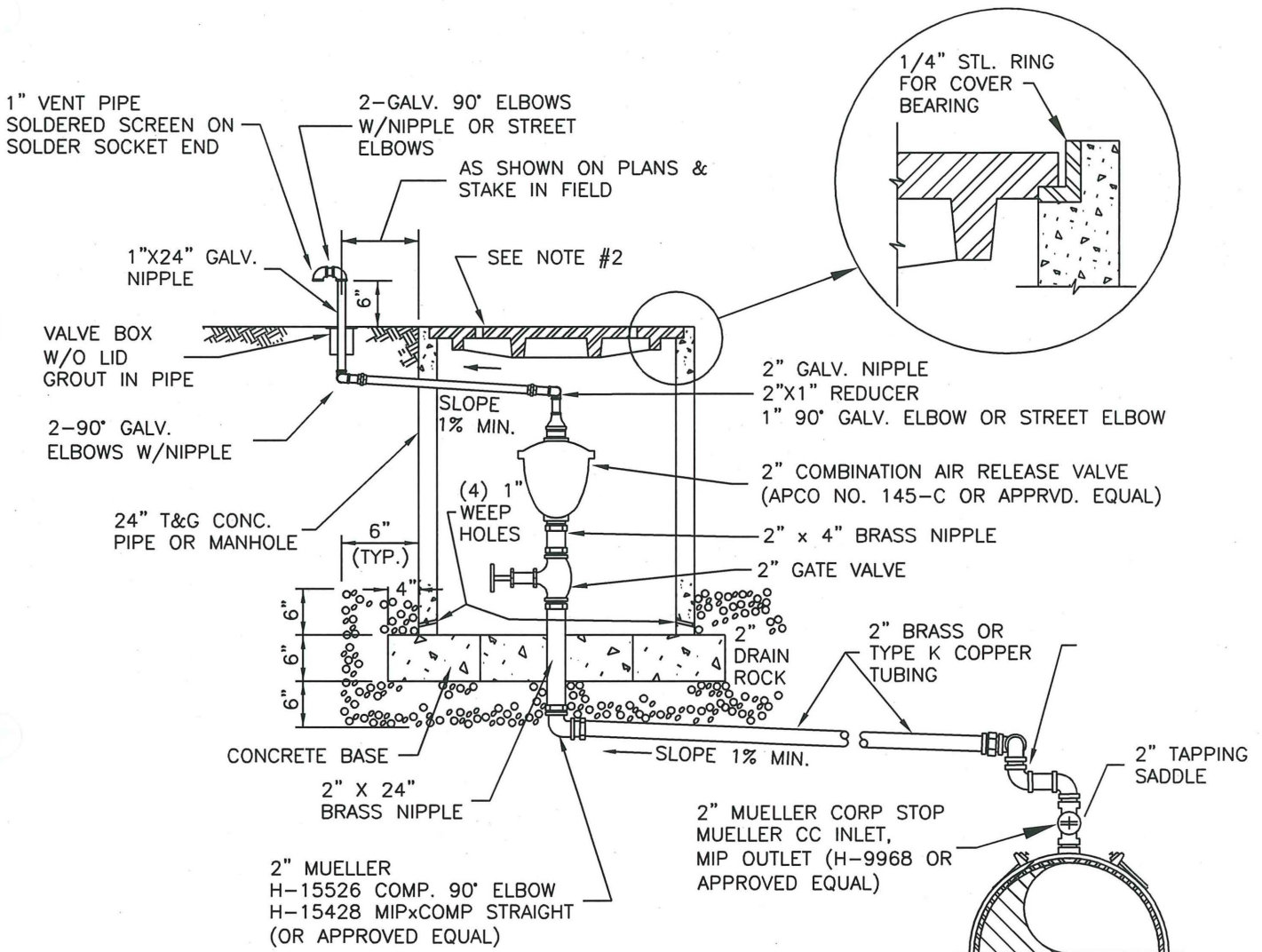


N:\CAD Data\Standard Dwgs\Water Details\WA-4.1_Comb Air Release Valve.dwg, 4/16/2007 8:56:12 AM



NOTE:

1. PLACE VENT AND AIR RELEASE UNIT ASSEMBLY OUTSIDE OF HARD SURFACED AREA IN R.O.W. OR 15' EASEMENT DEDICATED TO THE CITY OF VANCOUVER
2. MANHOLE COVER SHALL BE SALEM IRON WORKS NO. A2974 OR APPROVED EQUAL W/4 1/2" VENT HOLES ON 17" CIRCLE.

COMBINATION AIR RELEASE VALVE

PLAN #



CITY OF BATTLE GROUND
APPROVED

CITY ENGINEER

DATE

REVISIONS: DATE: DRAWN: DESIGNED:

1 4/16/07 JMH MCH

WA-4.1