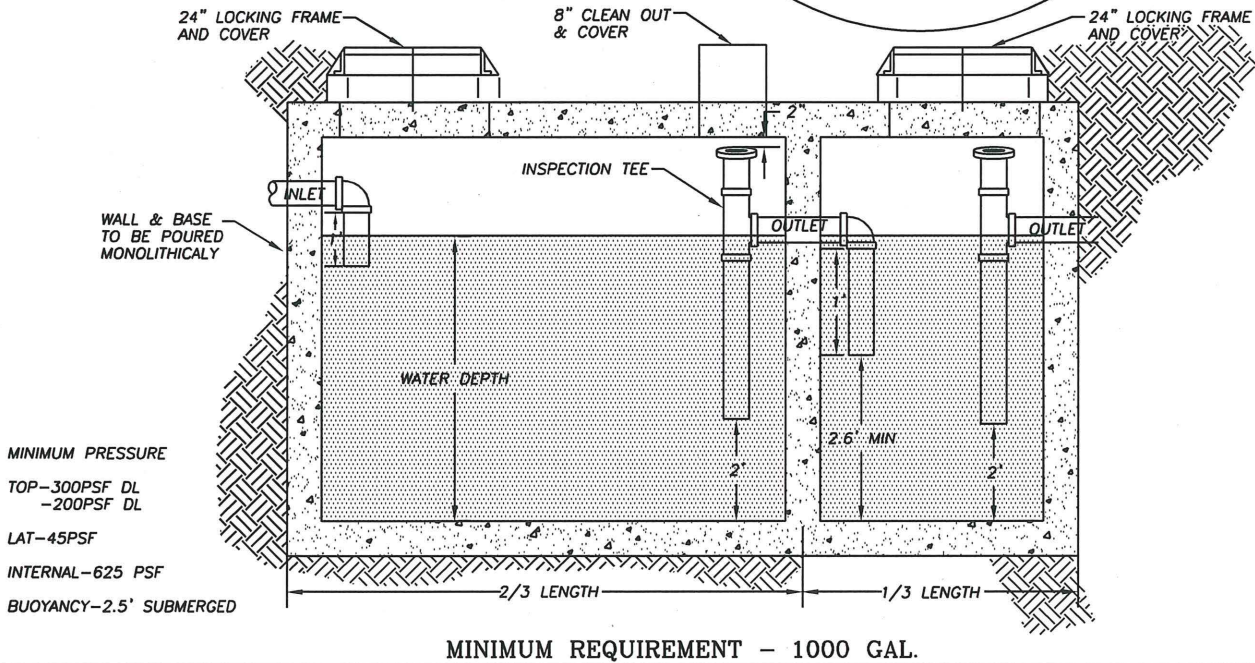
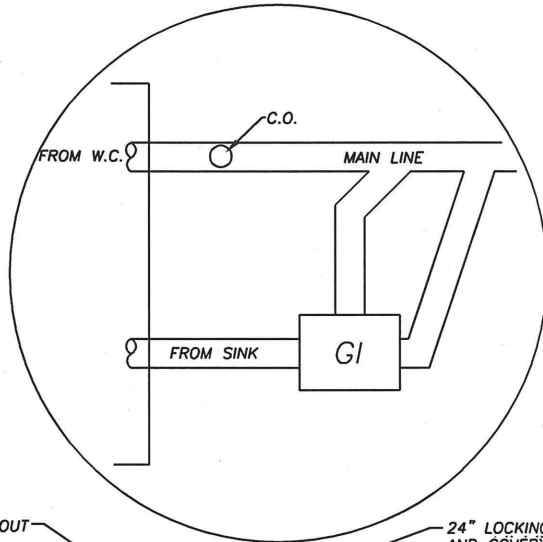
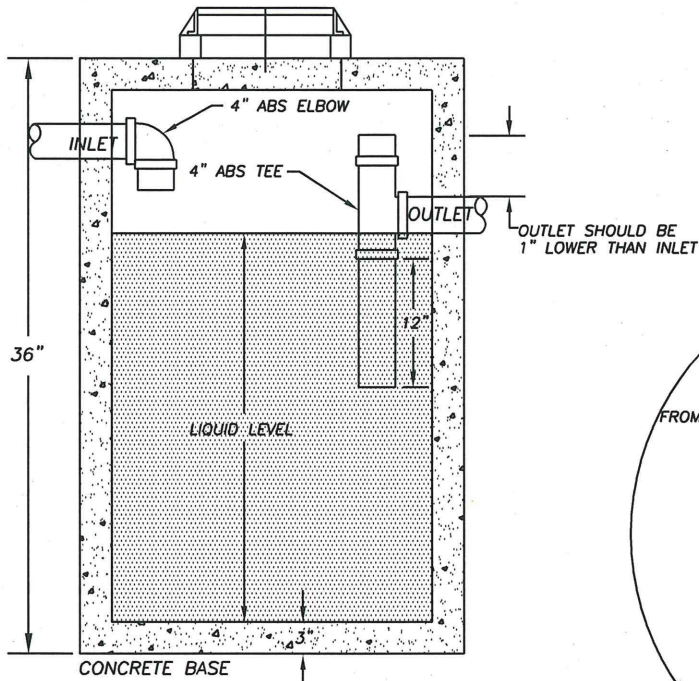


N:\CAD Data\Standard Dwg\Sanitary Sewer Details\SS-3.4\_Grease Interceptor.dwg 2/28/2007 2:04:39 PM

**NOTES:**

- 1.) CONCRETE: 28 DAY COMPRESSIVE STRENGTH PC=4500psi
  - 2.) POSITION RISERS BELOW & OFF-CENTER OF MANHOLES TO ALLOW ACCESS & ENTRY
  - 3.) REBAR: ASTM A-615 GRADE 60
  - 4.) MESH: ASTM A-185 GRADE 65
  - 5.) DESIGN: ACI-318-83 BUILDING CODE  
ASTM C-857 "MINIMUM STRUCTURAL DESIGN LOADING FOR UNDERGROUND PRECAST CONCRETE UTILITY STRUCTURES"
  - 6.) LOADS: H-20 TRUCK W/ 30% IMPACT PER ASSHTO
  - 7.) FILL W/ CLEAN WATER PRIOR TO START-UP OF SYSTEM
  - 8.) CONTRACTOR TO SUPPLY & INSTALL ALL PIPING & SAMPLING TEES
  - 9.) GRAY WATER ONLY. BLACK WATER SHALL BE CARRIED BY SEPERATE SIDE SEWER
  - 10.) 1500 OR GREATER REQUIRES A 3RD LOCKING FRAME & COVER
- \* LARGER TANKS MAY BE REQUIRED AS APPROVED BY CITY ENGINEER



MINIMUM PRESSURE  
TOP-300PSF DL  
-200PSF DL  
LAT-45PSF  
INTERNAL-625 PSF  
BUOYANCY-2.5' SUBMERGED

**GREASE INTERCEPTOR**

PLAN #



CITY OF BATTLE GROUND  
APPROVED

*Sam Adams* 3-28-07  
CITY ENGINEER DATE

REVISIONS:	DATE:	DRAWN:	DESIGNED:
1	8/12/98	BSG	GGH
2	8/30/05	ALL	MCH
3	3/28/07	JMH	MCH

SS-3.4