

# **CITY OF BATTLE GROUND**

**Public Works Department**

**MONTHLY REPORT**

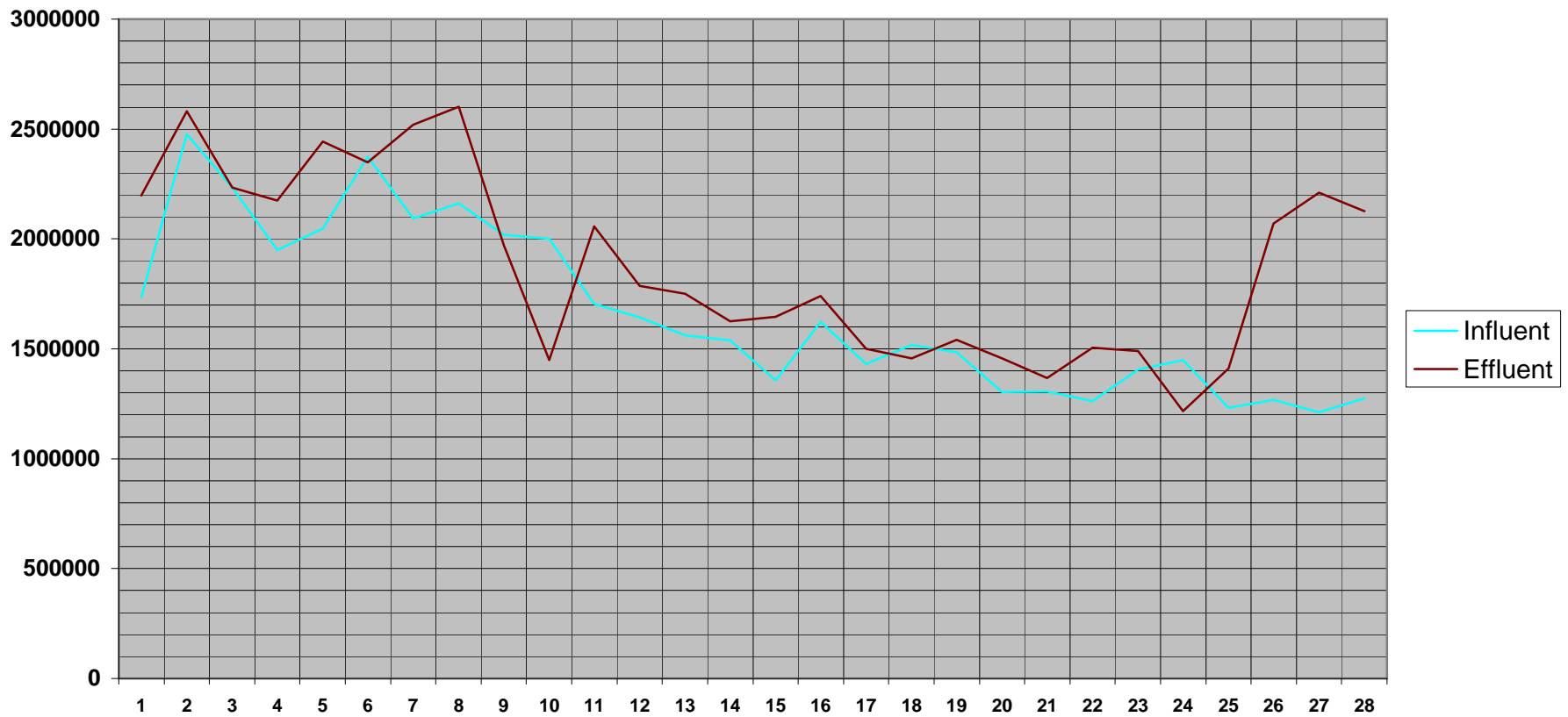
**February 2008**

# WasteWater Flow in Gallons

February 2008

Day	Hockinson	Meadow Glade	Battle Ground	Influent Totals	Effluent Totals					
1	12000	211000	1511850	1734850	2196500					
2	13000	250000	2212460	2475460	2582100					
3	8000	200000	2025670	2233670	2233400					
4	10000	193000	1747370	1950370	2174800					
5	11000	221000	1815210	2047210	2442300					
6	14000	222000	2137820	2373820	2347400					
7	11000	192000	1888870	2091870	2520200					
8	14000	202000	1946910	2162910	2602000					
9	8000	184000	1827680	2019680	1971600					
10	6000	164000	1831060	2001060	1449900		Avg	Min	Max	
11	8000	161000	1534370	1703370	2058000	<b>Influent</b>				
12	8000	160000	1474950	1642950	1785000	Hockinson	241000	8310.345	4000	14000
13	7000	164000	1389810	1560810	1751600	Meadow Glade	5101000	175896.6	139000	250000
14	8000	152000	1378780	1538780	1626100	Battle Ground	42423100	1462866	958940	2212460
15	8000	160000	1187930	1355930	1644800					
16	4000	189000	1429410	1622410	1739900	<b>Total Influent</b>	47765100	1647072	1105940	2475460
17	4000	171000	1255630	1430630	1499500					
18	4000	157000	1357410	1518410	1455500					
19	6000	172000	1306190	1484190	1540300	<b>Total Effluent</b>	54296300	1872286	1217300	2602000
20	7000	163000	1133970	1303970	1457400					
21	6000	152000	1147250	1305250	1366500					
22	8000	169000	1086300	1263300	1503900					
23	7000	175000	1223360	1405360	1490400					
24	5000	158000	1284770	1447770	1217300					
25	9000	157000	1064840	1230840	1411300					
26	9000	156000	1103570	1268570	2071100					
27	9000	147000	1054700	1210700	2210600					
28	9000	160000	1106020	1275020	2125100					
29	8000	139000	958940	1105940	1821800					
Total	241000	5101000	42423100	47765100	54296300					
Total Ytd	596000	11290000	92328596	104214596	120679900					

# Battle Ground Waste Water Flow February 2008



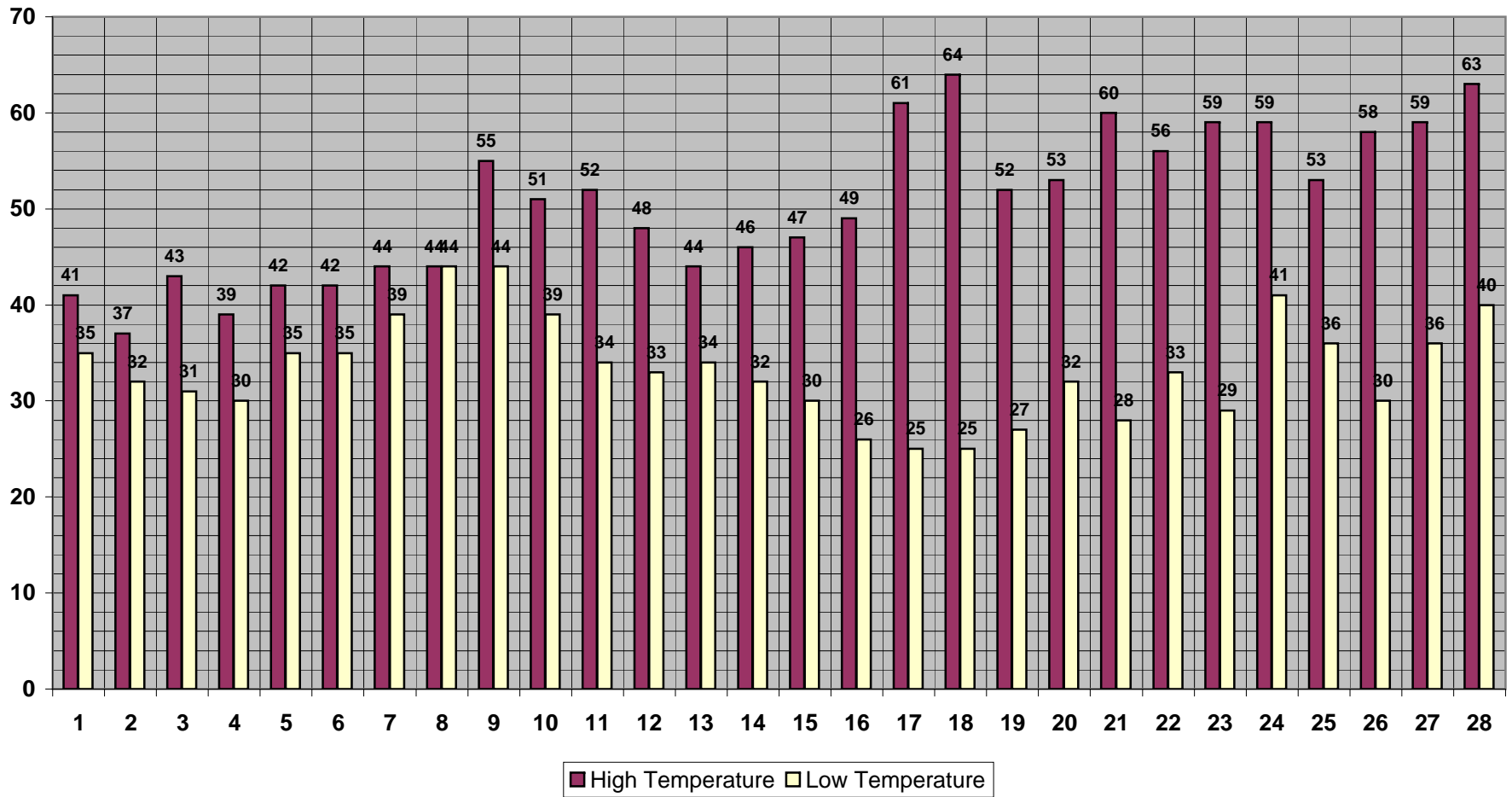
# BATTLE GROUND TEMPERATURES

February 2008

Day	High Temp	Low Temp	Average
1	41	35	38
2	37	32	34.5
3	43	31	37
4	39	30	34.5
5	42	35	38.5
6	42	35	38.5
7	44	39	41.5
8	44	44	44
9	55	44	49.5
10	51	39	45
11	52	34	43
12	48	33	40.5
13	44	34	39
14	46	32	39
15	47	30	38.5
16	49	26	37.5
17	61	25	43
18	64	25	44.5
19	52	27	39.5
20	53	32	42.5
21	60	28	44
22	56	33	44.5
23	59	29	44
24	59	41	50
25	53	36	44.5
26	58	30	44
27	59	36	47.5
28	63	40	51.5
29	62	41	51.5

High Temperature	64
Low Temperature	25
<i>Average High Temperature</i>	51.1
<i>Average Low Temperature</i>	33.7

### Battle Ground Temperature February 2008



# BATTLE GROUND PRECIPITATION

February 2008

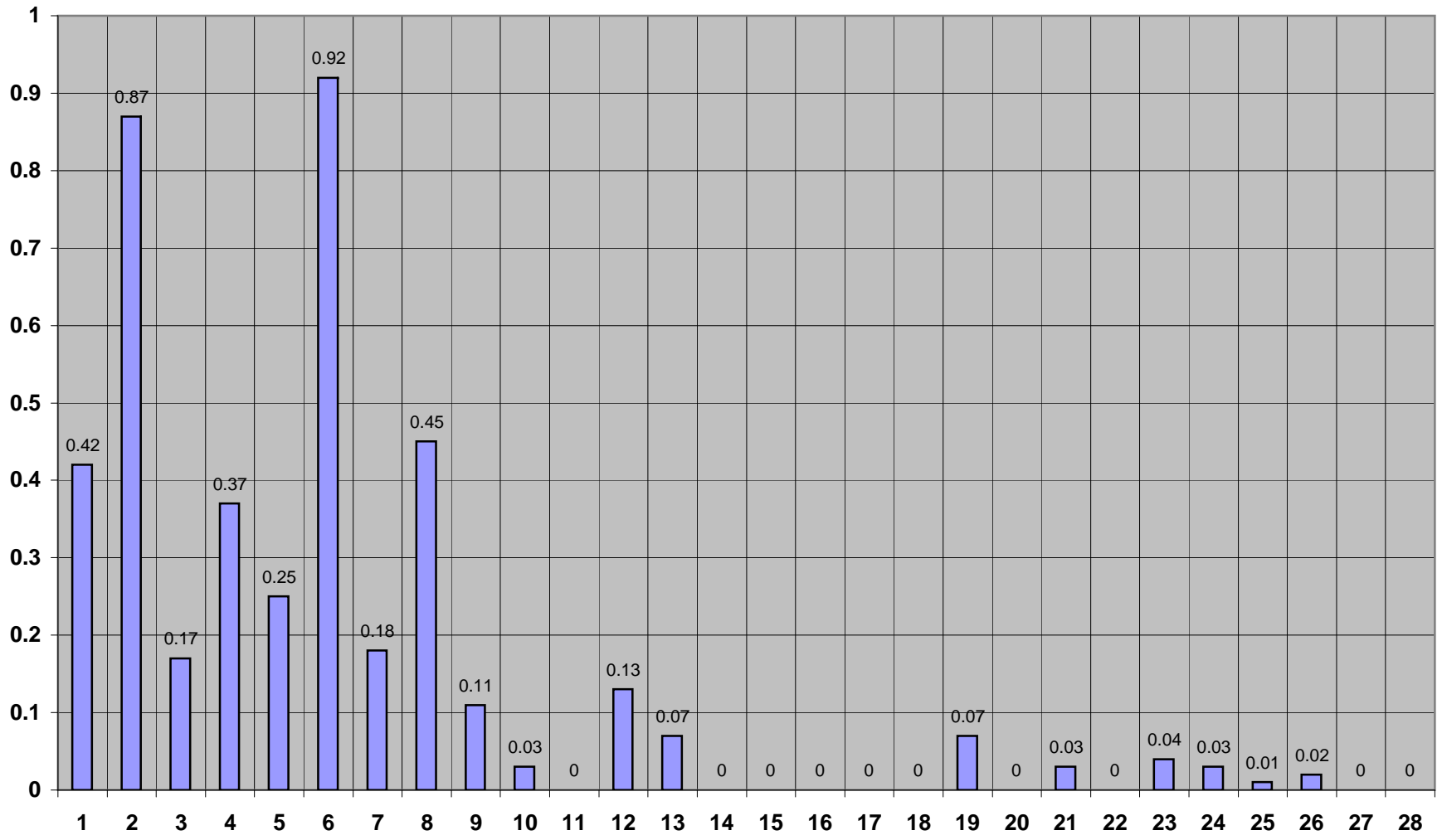
**Day**

1	0.42
2	0.87
3	0.17
4	0.37
5	0.25
6	0.92
7	0.18
8	0.45
9	0.11
10	0.03
11	0
12	0.13
13	0.07
14	0
15	0
16	0
17	0
18	0
19	0.07
20	0
21	0.03
22	0
23	0.04
24	0.03
25	0.01
26	0.02
27	0
28	0
29	0.11

<b>Total Precipitation</b>	<b>4.28</b>
<b>Min</b>	<b>0</b>
<b>Max</b>	<b>0.92</b>
<b>Avg</b>	<b>0.147586</b>

<b>Total Precip. YTD =</b>	<b>11.81</b>
----------------------------	--------------

Battle Ground Precipitation February 2008





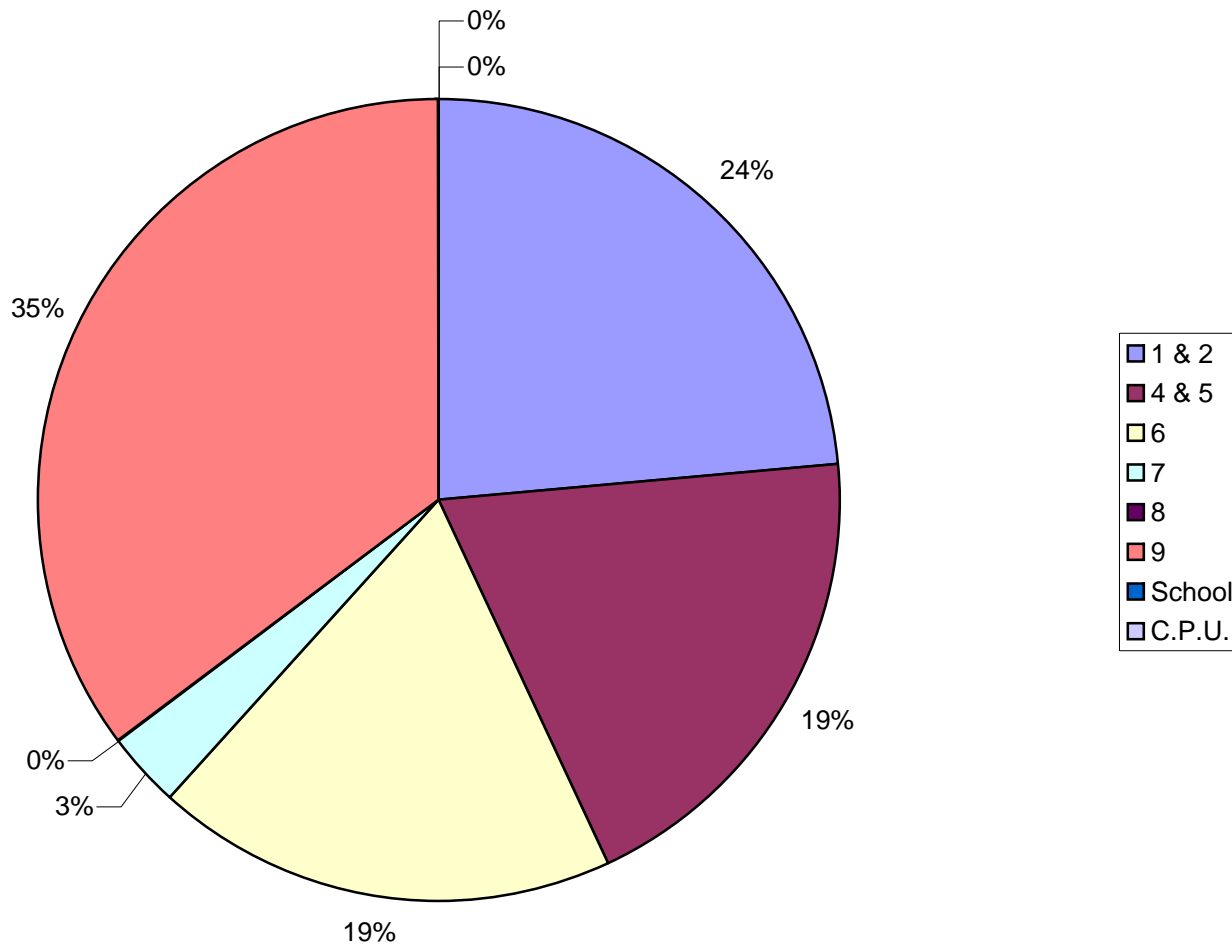
# CITY OF BATTLE GROUND - WELL PRODUCTION

Feb '08

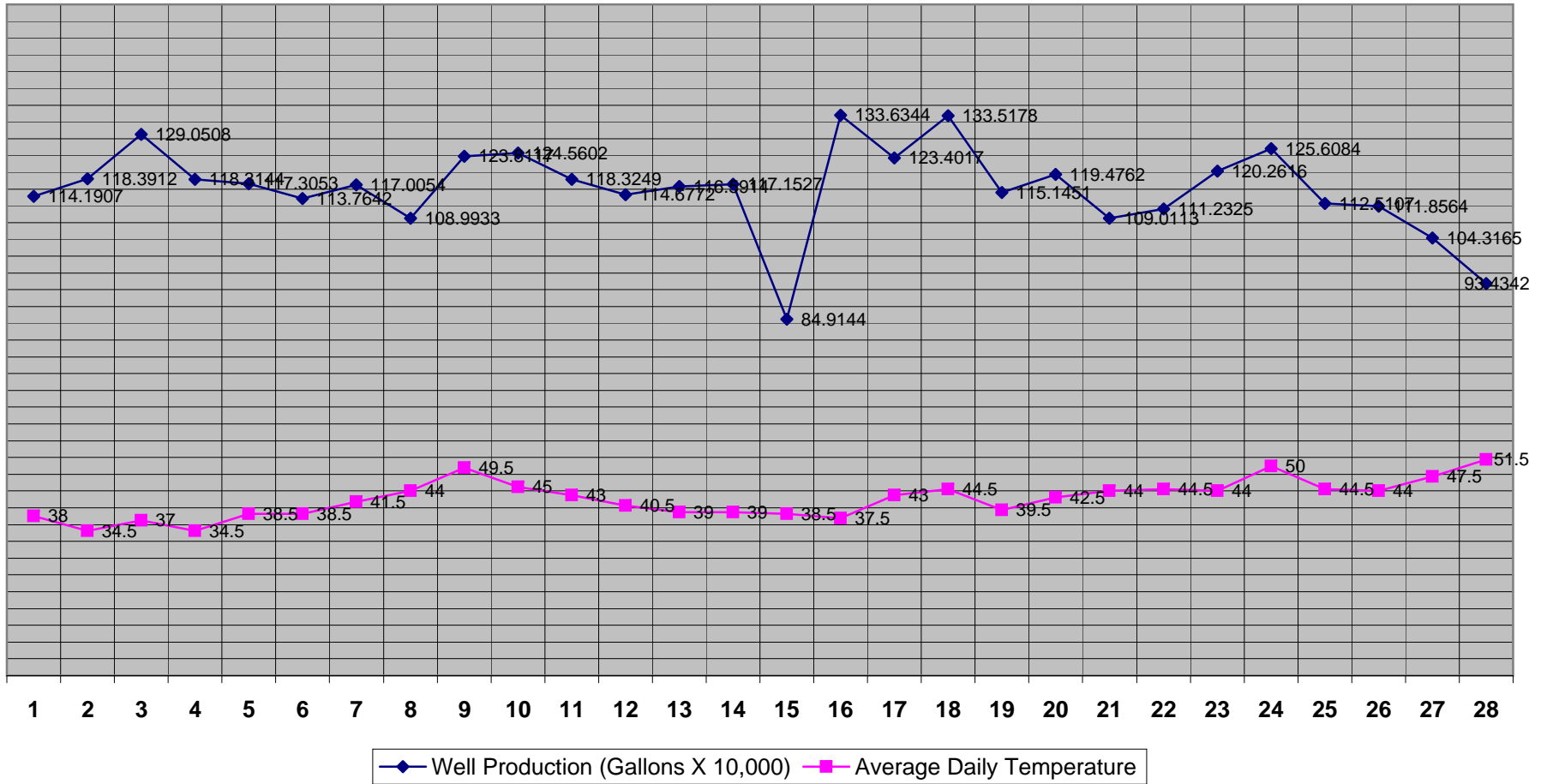
## Pump Station

Day	1 & 2	4 & 5	6	7	8	9	School	C.P.U.	TOTALS
1	294,619	226,501	228,787			392,000			1,141,907
2	262,491	217,410	209,011			495,000			1,183,912
3	267,339	226,882	234,287			562,000			1,290,508
4	294,245	218,789	236,110			434,000			1,183,144
5	292,000	225,600	245,453			410,000			1,173,053
6	285,480	220,888	228,274			403,000			1,137,642
7	284,600	227,054	238,400			420,000			1,170,054
8	283,086	223,630	220,217			363,000			1,089,933
9	268,028	227,894	219,195			523,000			1,238,117
10	261,201	218,267	230,134			536,000			1,245,602
11	293,341	222,102	237,806			430,000			1,183,249
12	287,577	223,525	234,670			401,000			1,146,772
13	311,040	230,704	245,170			379,000			1,165,914
14	284,233	223,761	234,533			429,000			1,171,527
15	277,459	214,816	209,869			147,000			849,144
16	275,038	241,827	211,479			608,000			1,336,344
17	245,812	214,420	198,785			575,000			1,234,017
18	290,031	229,617	241,530			574,000			1,335,178
19	273,802	221,044	217,605			439,000			1,151,451
20	292,351	231,611	233,800			437,000			1,194,762
21	273,006	212,664	216,443			388,000			1,090,113
22	287,693	225,772	214,860			384,000			1,112,325
23	267,080	232,600	206,936			496,000			1,202,616
24	263,186	221,758	204,140			567,000			1,256,084
25	228,907	220,734	168,466			507,000			1,125,107
26	276,843	219,410	210,311			412,000			1,118,564
27	228,361	229,590	175,214	316,000		94,000			1,043,165
28	207,107	220,024	156,211	351,000		0			934,342
29	299,703	216,219	216,552	341,000		62,000			1,135,474
<b>TOTAL</b>	<b>7,955,659</b>	<b>6,485,113</b>	<b>6,324,248</b>	<b>1,008,000</b>	<b>0</b>	<b>11,867,000</b>	<b>0</b>	<b>0</b>	<b>32,504,546</b>
Daily Avg.	274,333	223,625	218,078	336,000	#DIV/0!	409,207	#DIV/0!	#DIV/0!	1,160,877
Maximum	311,040	241,827	245,453	351,000	0	608,000	0	0	1,336,344
Minimum	207,107	212,664	156,211	316,000	0	0	0	0	849,144
Total A.F.	24.42	19.90	19.41	3.09	0.00	36.42	0.00	0.00	103.24
A.F. YTD	48.53	41.19	38.84	3.09	2.66	81.10	0.00	0.00	215.42
Total A.F. produced this month by BG wells				103.24	Total A.F. produced by BG wells YTD				215.42

# Battle Ground Well Production February 2008



Battle Ground Avg. Daily Temperature - Total Daily Well Production February 2008



### Waste Water Influent - Precipitation February 2008

